

## PASSERELLA CICLOPEDONALE

### COMMITENTE:

CESI S.p.A.

### CLIENTE:

Regione Lombardia  
Provincia di Sondrio

### PROGETTO:

Tangenzialina di Bormio

### LUOGO:

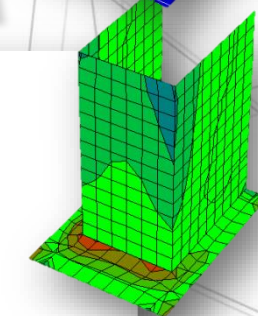
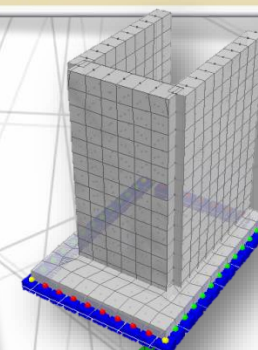
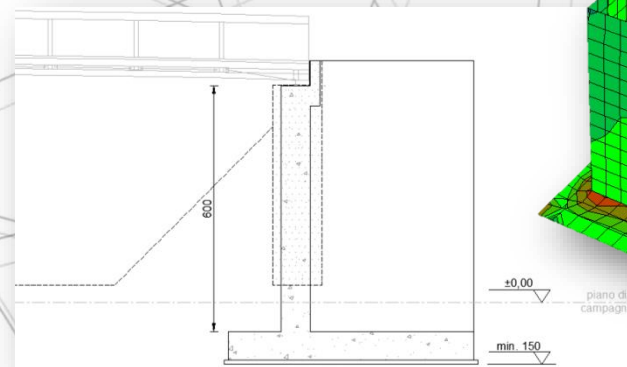
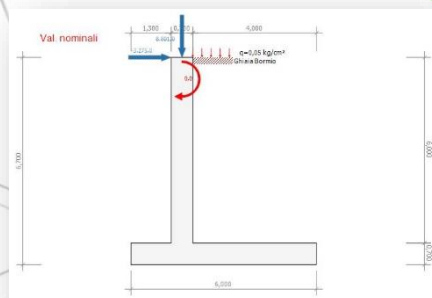
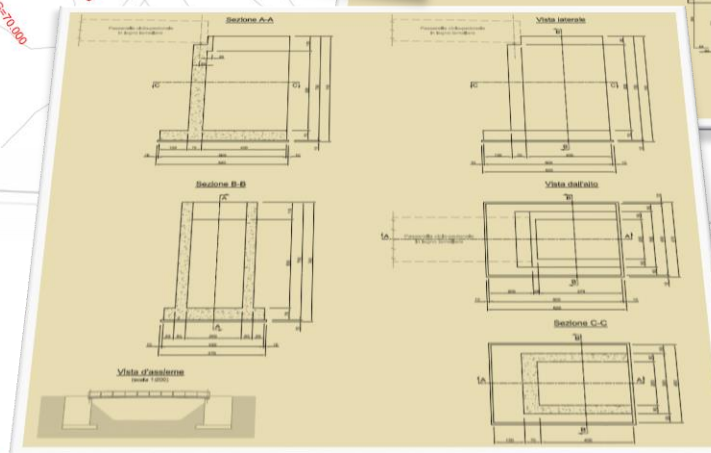
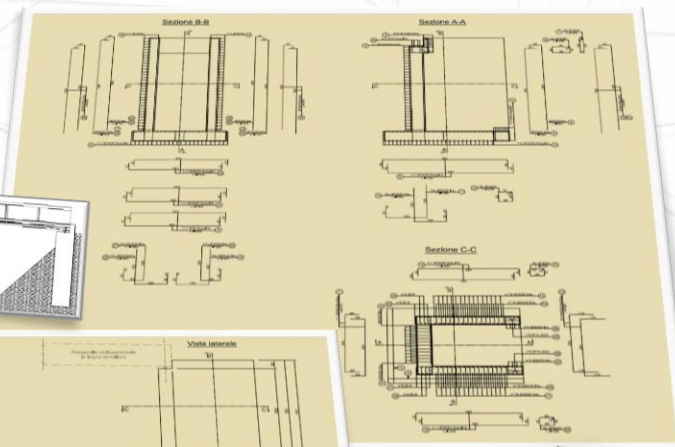
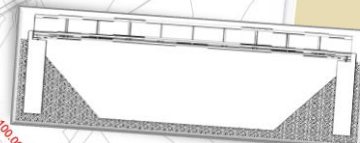
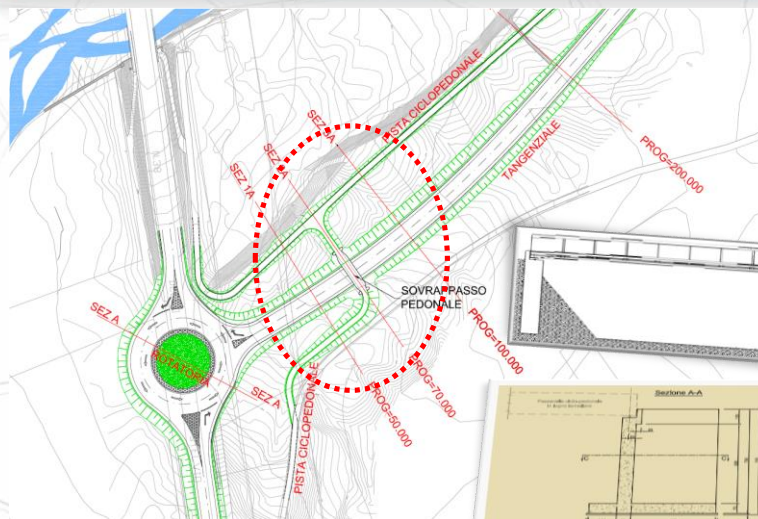
Bormio

### PRESTAZIONI:

Progettazione strutturale  
delle spalle della passerella  
ciclopeditone

### ANNO:

2004



0240-B-04-145-612

Infrastrutture  
Commerciale  
Pubblica  
Sportiva  
Edilizia  
Pianificazione  
depurazione  
E DI SERVIZIO  
Riqualificazione  
IDRAULICHE  
CRESIDENZIALE  
TERRITORIALE  
Religiosa  
Culturale  
Petrolchimico  
ACQUE  
urbane  
AMBIENTALI  
direzionale  
Produzione Industriale